

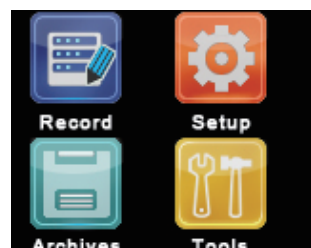
SleepView®

Sleep Screener

SleepView device is indicated for the screening of sleep disordered breathing. It records the following data: patient respiratory oral and nasal airflow, snoring, blood oxygen saturation, pulse and CPAP pressure. The device uses these recordings to generate a report for screening or for further clinical investigation.

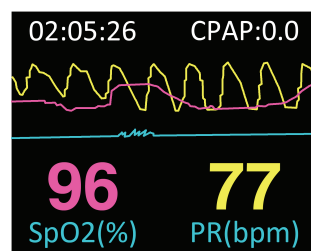


SleepView®



Excellent Ergonomic design

- Watch style, light weight and low electricity consumption
- 2-inch OLED, displays all parameters and waves in real time
- Icon operation, Recording length and Battery indication
- 24 hours embedded recording capacity, Micro-SD and Bluetooth optional



Powerful device for SDB

- 7 parameters: SpO2, Pulse rate, Airflow, Snoring, CPAP pressure, Battery and Recording time
- Compliant with the level IV of international sleep diagnosis standard
- Compliance evaluation of CPAP therapy
- Online instant test score



Abundant applications

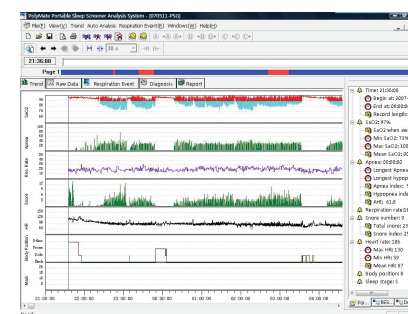
- Screening of SDB
- Evaluation of CPAP compliance
- Homecare of respiratory and pulmonary disease

Specialist of Sleep Diagnosis and Therapy

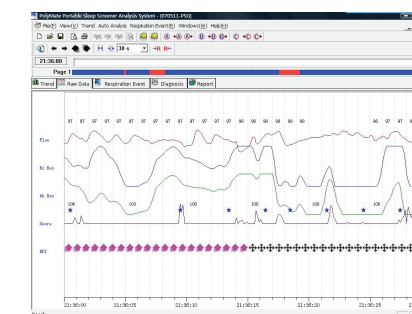


Powerful software and concise report

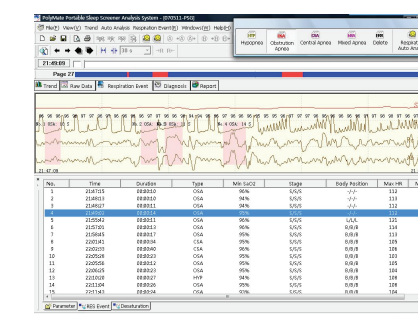
- Analysis software includes sleep disordered breathing, oxygen saturation reduction etc.



Trend graph



Raw waveform



Events

Technical Specifications:

| | |
|---------------------------------------|----------------------------|
| Oxygen Saturation Range: | 0 to 100% |
| Pulse Rate Range: | 30 ~ 240BPM |
| Nasal/Oral Airflow Rate Range: | 10 ~ 40/min |
| Wavelengths | |
| Red: | 660nm @ 3mw nominal |
| Infrared: | 910nm @ 3mw nominal |
| Accuracy | |
| SpO2: | 70 to 100% ±3% |
| Pulse Rate: | the larger of ±3% and 1BPM |
| Resolution | |
| SpO2: | 1% |
| Pulse Rate: | 1BPM |
| Temperature | |
| Operating: | 5°C ~ 40°C |
| Storage: | -20°C ~ +55°C |

| | |
|------------------------------|--|
| Humidity | |
| Operating: | 15% to 95% non-condensing |
| Storage: | 5% to 95% non-condensing |
| Atmosphere Pressure | |
| Operating: | 860 ~ 1060hPa |
| Storage: | 500 ~ 1060hPa |
| Power Requirements: | 2 AAA Batteries |
| Batteries Life | |
| Operating: | approximately 18 hours of continuous operation |
| Storage: | 9 months typical |
| Dimensions: | 62x57x21mm |
| Weight: | 70g (without batteries) |
| Type of Protection: | Internally Powered (on battery power) |
| Degree of Protection: | Type BF |
| Mode of Operation: | Continuous |

BMC Medical Co., Ltd.

Add:5/F, North No.2 Building, No.9 Shixing Street,
Shijingshan Beijing 100041, P.R.China
Tel: +86-10-51663880
Fax: +86-10-51663880 ext. 810
www.bmc-medical.com

